



Astral Tekno cylinders



Astral Tekno cylinders

CYLINDER SECURITY

Attack Resistance

- High resistance to “bumping” or percussion thanks to the BKP (Bump Key Power) device.
- High resistance to housebreaking technique: highly effective against wax impression burglary thanks to the BKP device and to the special shape of spring.
- Highly drill resistance, thanks to the hardened steel key biting system.
- Push-resistant through the projecting cam.

KEY SECURITY

Key Related Security

- Patented key for highly effective protection from illegal key duplication.
- Security Card for authorized key duplication by CISA or CISA authorized centers.
- 10 pin, 2 row key biting systems.
- Over 1,600,000 possible combinations or different keys.

MASTER KEYING POTENTIAL

- The 10-pin key biting system offers outstanding access management possibilities. E.g.: 63,000 different cylinders for one master key.

RELIABILITY

Durability

- Tested to max 100,000 cycles.

EN 1303: 2005

- Compliant with the European Standard EN 1303: 2005.

Attack Resistance: 0 0

Key Related Security: 6 1 2 3 4 5 6

Durability: 6 1 2 3 4 5 6

CERTIFICATIONS

- Ghost - Russia Certificate.

PATENTS

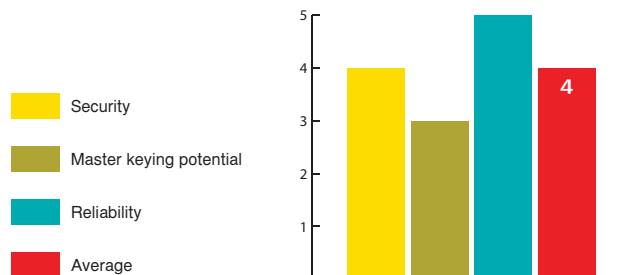
- Patent application: EP 1 867 810 B1
- BKP device: patent no. PCT/WO 2007/074163 A1

APPLICATIONS

Astral Tekno is the ideal product for medium-security applications for residential buildings and armored door industry. It offers satisfactory master keying potentials for companies, shopping malls, universities, hospitals combining access management with control of key duplication.



Ghost - Russia Certificate





Technical features

CYLINDER:

- 10 pin (6 active, 4 passive) key biting system.
- Brass body.
- Brass plugs.
- Self-lubricating DIN sintered steel clutch-type cam.
- Cemented steel pins.
- **Variable shape** hardened steel pin drivers.
- **Steel double side control pin.**
- Phosphorous bronze and steel springs.

KEY:

- Non-handed flat key.
- Nickel-plated brass.
- Plastic material ergonomic grip head.
- Neck length 16 mm (compatible with protective roses).
- Key numerical coding.
- Key thickness 2.9 mm.
- Depth 0.48 mm.

Finishes

- Standard: nickel plated brass (fin.12).
- On request: polished brass (fin.66).

Options on request

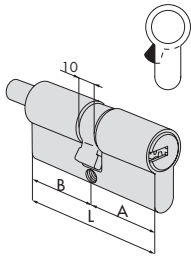
- KA, MK, GMK, GGMK, CE, CA, C5, CP, PP.
- CP with customizable plastic head insert.

Standard equipment

- 3 keys item 1.00690.00.0.00.CL.
- Security Card.
- Fixing screw.
- Operating and Maintenance Instructions.

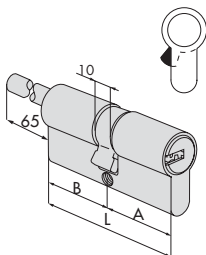
Type	Description	Comm.	Dim.	L	A	B	Pins	Key item	Kg	Unit weight	Pieces	ITEM			
												Type	Dim.	Hand	Fin.
	<ul style="list-style-type: none"> • Double cylinder with clutch 	30/30		59,0	29,5	29,5	10	1 00690 00 0	0,235	1	1	OM311 07 0 12 CL			
		28/34		61,2	27,7	33,5	10	1 00690 00 0	0,234	1	1	OM311 06 0 12 CL			
		28/36		63,2	27,7	35,5	10	1 00690 00 0	0,240	1	1	OM311 09 0 12 CL			
		30/35		64,0	29,5	34,5	10	1 00690 00 0	0,243	1	1	OM311 26 0 12 CL			
		33/33		65,0	32,5	32,5	10	1 00690 00 0	0,258	1	1	OM311 10 0 12 CL			
		35/35		69,0	34,5	34,5	10	1 00690 00 0	0,272	1	1	OM311 13 0 12 CL			
		40/30		69,0	39,5	29,5	10	1 00690 00 0	0,272	1	1	OM311 12 0 12 CL			
		28/43		70,2	27,7	42,5	10	1 00690 00 0	0,262	1	1	OM311 11 0 12 CL			
		30/45		74,0	29,5	44,5	10	1 00690 00 0	0,274	1	1	OM311 27 0 12 CL			
		35/40		74,0	34,5	39,5	10	1 00690 00 0	0,274	1	1	OM311 28 0 12 CL			
		30/50		79,0	29,5	49,5	10	1 00690 00 0	0,301	1	1	OM311 17 0 12 CL			
		35/45		79,0	34,5	44,5	10	1 00690 00 0	0,289	1	1	OM311 19 0 12 CL			
		40/40		79,0	39,5	39,5	10	1 00690 00 0	0,289	1	1	OM311 18 0 12 CL			
		30/55		84,0	29,5	54,5	10	1 00690 00 0	0,304	1	1	OM311 33 0 12 CL			
		35/50		84,0	34,5	49,5	10	1 00690 00 0	0,360	1	1	OM311 31 0 12 CL			
		40/45		84,0	39,5	45,5	10	1 00690 00 0	0,360	1	1	OM311 30 0 12 CL			
		43/43		85,0	42,5	42,5	10	1 00690 00 0	0,308	1	1	OM311 46 0 12 CL			
		30/60		89,0	29,5	59,5	10	1 00690 00 0	0,320	1	1	OM311 20 0 12 CL			
		35/55		89,0	34,5	54,5	10	1 00690 00 0	0,332	1	1	OM311 32 0 12 CL			
		40/50		89,0	39,5	49,5	10	1 00690 00 0	0,320	1	1	OM311 21 0 12 CL			
		45/45		89,0	44,5	44,5	10	1 00690 00 0	0,333	1	1	OM311 29 0 12 CL			
		30/65		94,0	29,5	64,5	10	1 00690 00 0	0,334	1	1	OM311 41 0 12 CL			
		35/60		94,0	34,5	59,5	10	1 00690 00 0	0,390	1	1	OM311 38 0 12 CL			
		40/55		94,0	39,5	54,5	10	1 00690 00 0	0,355	1	1	OM311 42 0 12 CL			
		45/50		94,0	44,5	49,5	10	1 00690 00 0	0,334	1	1	OM311 39 0 12 CL			
		30/70		99,0	29,5	69,5	10	1 00690 00 0	0,349	1	1	OM311 24 0 12 CL			
		35/65		99,0	34,5	64,5	10	1 00690 00 0	0,349	1	1	OM311 22 0 12 CL			
		40/60		99,0	39,5	59,5	10	1 00690 00 0	0,349	1	1	OM311 25 0 12 CL			
		45/55		99,0	44,5	54,5	10	1 00690 00 0	0,349	1	1	OM311 43 0 12 CL			
		50/50		99,0	49,5	49,5	10	1 00690 00 0	0,349	1	1	OM311 23 0 12 CL			
30/80		109,0	29,5	79,5	10	1 00690 00 0	0,378	1	1	OM311 37 0 12 CL					
40/70		109,0	39,5	69,5	10	1 00690 00 0	0,400	1	1	OM311 35 0 12 CL					
50/60		109,0	49,5	59,5	10	1 00690 00 0	0,402	1	1	OM311 36 0 12 CL					
55/55		109,0	54,5	54,5	10	1 00690 00 0	0,378	1	1	OM311 70 0 12 CL					
50/65		114,0	49,5	64,5	10	1 00690 00 0	0,378	1	1	OM311 65 0 12 CL					
55/60		114,0	54,5	59,5	10	1 00690 00 0	0,420	1	1	OM311 71 0 12 CL					
40/80		119,0	39,5	79,5	10	1 00690 00 0	0,378	1	1	OM311 60 0 12 CL					
60/60		119,0	59,5	59,5	10	1 00690 00 0	0,410	1	1	OM311 40 0 12 CL					
	<ul style="list-style-type: none"> • Single cylinder with 8 position adjustable cam 	30/10		39,5	29,5	10,0	10	1 00690 00 0	0,185	1	1	OM314 02 0 12 CL			
		33/10		32,5	29,5	10,0	10	1 00690 00 0	0,185	1	1	OM314 09 0 12 CL			
		35/10		44,5	34,5	10,0	10	1 00690 00 0	0,195	1	1	OM314 07 0 12 CL			
		37/10		46,5	36,5	10,0	10	1 00690 00 0	0,195	1	1	OM314 10 0 12 CL			
		40/10		49,5	39,5	10,0	10	1 00690 00 0	0,215	1	1	OM314 03 0 12 CL			
		43/10		52,5	42,5	10,0	10	1 00690 00 0	0,215	1	1	OM314 11 0 12 CL			
		45/10		54,5	44,5	10,0	10	1 00690 00 0	0,225	1	1	OM314 08 0 12 CL			
		50/10		59,5	49,5	10,0	10	1 00690 00 0	0,245	1	1	OM314 04 0 12 CL			
		55/10		64,5	54,5	10,0	10	1 00690 00 0	0,245	1	1	OM314 35 0 12 CL			
		60/10		69,5	59,5	10,0	10	1 00690 00 0	0,275	1	1	OM314 05 0 12 CL			
		65/10		74,5	64,5	10,0	10	1 00690 00 0	0,290	1	1	OM314 21 0 12 CL			
		70/10		79,5	69,5	10,0	10	1 00690 00 0	0,305	1	1	OM314 06 0 12 CL			
80/10		89,5	79,5	10,0	10	1 00690 00 0	0,330	1	1	OM314 20 0 12 CL					
95/10		104,5	94,5	10,0	10	1 00690 00 0	0,380	1	1	OM314 13 0 12 CL					

Type	Description	Comm.	Dim.	L	A	B	Pins	Key item	Kg	Pieces	ITEM				
											Type	Dim.	Hand	Fin.	Pers.



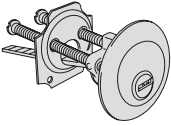
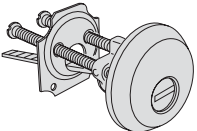
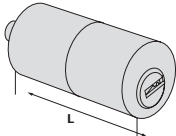
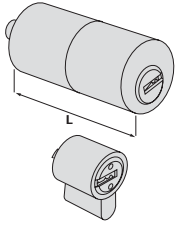
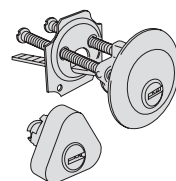
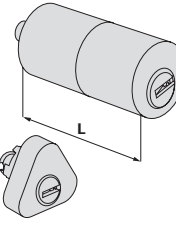
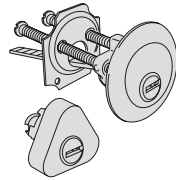
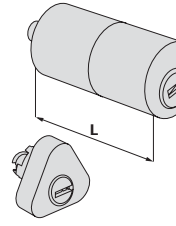
- Double cylinder pre-set for thumb turn installation
- ON REQUEST:
Thumb-turn devices items
06353, 06355, 06356, 06357

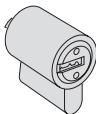
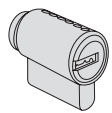
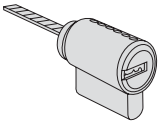
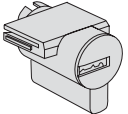
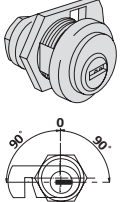
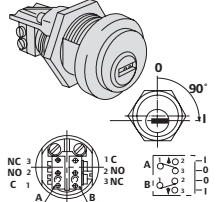
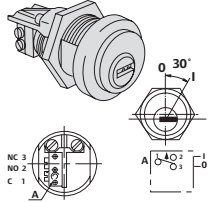
30/30	59,0	29,5	29,5	10	1	00690 00 0	0,244	1	1	OM312 07 0 12 CL
30/35	64,0	29,5	34,5	10	1	00690 00 0	0,264	1	1	OM312 26 0 12 CL
35/30	64,0	34,5	29,5	10	1	00690 00 0	0,259	1	1	OM312 81 0 12 CL
33/33	65,0	32,5	32,5	10	1	00690 00 0	0,267	1	1	OM312 10 0 12 CL
30/40	69,0	29,5	39,5	10	1	00690 00 0	0,279	1	1	OM312 82 0 12 CL
35/35	69,0	34,5	34,5	10	1	00690 00 0	0,279	1	1	OM312 13 0 12 CL
40/30	69,0	39,5	29,5	10	1	00690 00 0	0,279	1	1	OM312 12 0 12 CL
35/40	74,0	34,0	39,5	10	1	00690 00 0	0,294	1	1	OM312 28 0 12 CL
30/45	74,0	29,0	44,5	10	1	00690 00 0	0,294	1	1	OM312 27 0 12 CL
40/35	74,0	39,5	34,5	10	1	00690 00 0	0,294	1	1	OM312 83 0 12 CL
45/30	74,0	44,5	29,5	10	1	00690 00 0	0,294	1	1	OM312 91 0 12 CL
30/50	79,0	29,5	49,5	10	1	00690 00 0	0,318	1	1	OM312 17 0 12 CL
35/45	79,0	34,5	44,5	10	1	00690 00 0	0,309	1	1	OM312 19 0 12 CL
40/40	79,0	39,5	39,5	10	1	00690 00 0	0,309	1	1	OM312 18 0 12 CL
45/35	79,0	44,5	34,5	10	1	00690 00 0	0,309	1	1	OM312 85 0 12 CL
40/45	84,0	39,5	44,5	10	1	00690 00 0	0,324	1	1	OM312 30 0 12 CL
45/40	84,0	44,5	39,5	10	1	00690 00 0	0,324	1	1	OM312 84 0 12 CL
50/35	84,0	49,5	34,5	10	1	00690 00 0	0,324	1	1	OM312 94 0 12 CL
43/43	85,0	42,5	42,5	10	1	00690 00 0	0,326	1	1	OM312 46 0 12 CL
30/60	89,0	29,5	59,5	10	1	00690 00 0	0,353	1	1	OM312 20 0 12 CL
40/50	89,0	39,5	49,5	10	1	00690 00 0	0,350	1	1	OM312 21 0 12 CL
45/45	89,0	44,5	44,5	10	1	00690 00 0	0,347	1	1	OM312 29 0 12 CL
40/55	94,0	39,5	54,5	10	1	00690 00 0	0,355	1	1	OM312 42 0 12 CL
55/40	94,0	54,5	39,5	10	1	00690 00 0	0,367	1	1	OM312 98 0 12 CL
45/50	94,0	44,5	49,5	10	1	00690 00 0	0,367	1	1	OM312 39 0 12 CL
40/60	99,0	39,5	59,5	10	1	00690 00 0	0,367	1	1	OM312 25 0 12 CL
45/55	99,0	44,5	54,5	10	1	00690 00 0	0,370	1	1	OM312 43 0 12 CL
50/50	99,0	49,5	49,5	10	1	00690 00 0	0,370	1	1	OM312 23 0 12 CL
45/60	104,0	44,5	59,5	10	1	00690 00 0	0,398	1	1	OM312 54 0 12 CL
55/50	104,0	54,5	49,5	10	1	00690 00 0	0,384	1	1	OM312 64 0 12 CL
30/80	109,0	29,5	79,5	10	1	00690 00 0	0,400	1	1	OM312 37 0 12 CL
40/70	109,0	39,5	69,5	10	1	00690 00 0	0,400	1	1	OM312 35 0 12 CL
50/60	109,0	49,5	59,5	10	1	00690 00 0	0,400	1	1	OM312 36 0 12 CL



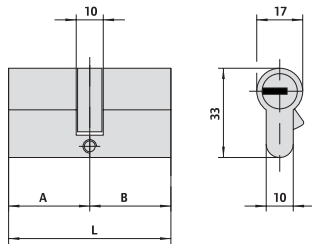
- Double cylinder pre-set for thumb turn installation, adjustable shaft
- To install with protective rose item 1.06458.20
- ON REQUEST:
Thumb-turn devices items
06353, 06355, 06356, 06357

30/30	59,0	29,5	29,5	10	1	00690 00 0	0,284	1	1	OM317 07 0 12 CL
35/30	64,0	34,5	29,5	10	1	00690 00 0	0,294	1	1	OM317 81 0 12 CL
40/30	69,0	39,5	29,5	10	1	00690 00 0	0,312	1	1	OM317 12 0 12 CL
45/30	74,0	44,5	29,5	10	1	00690 00 0	0,320	1	1	OM317 91 0 12 CL
50/30	79,0	49,5	29,5	10	1	00690 00 0	0,329	1	1	OM317 90 0 12 CL
55/30	84,0	54,5	29,5	10	1	00690 00 0	0,345	1	1	OM317 92 0 12 CL
60/30	89,0	59,5	29,5	10	1	00690 00 0	0,359	1	1	OM317 87 0 12 CL
65/30	94,0	64,5	29,5	10	1	00690 00 0	0,359	1	1	OM317 A3 0 12 CL
70/30	99,0	69,5	29,5	10	1	00690 00 0	0,370	1	1	OM317 88 0 12 CL
80/30	110,0	79,5	29,5	10	1	00690 00 0	0,359	1	1	OM317 93 0 12 CL

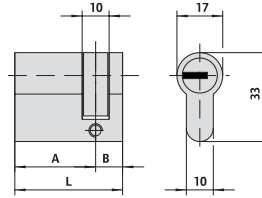
Type	Description	For locks series	L	Pins	Key item	Kg	Pieces	ITEM				
								Type	Dim.	Hand	Fin.	Pers.
	• Cylinder	1A610, 11540, 11610, 11615, 50010, 50110, 50115, 50130, 50180, 50330, 54310, 50312, 54315, 54340, 54342, 54350, 54352, 54510, 54512, 54550, 54552, 54570, 54572	10	100690	00 0	0,204	1	1	OM510	00 0	12 CL	
	• Cylinder with nickel-plated anti-pulling and drill resistant protective rose		10	100690	00 0	0,325	1	1	OM510	10 0	12 CL	
	• Tubular cylinder	1A611, 11611, 50111, 50116, 50131, 50181, 50411, 50481, 50511, 50581, 54316, 54341	50,0	10	100690	00 0	0,215	1	1	OM210	50 0	12 CL
	• Pair of cylinders with external tubular cylinder	1A631, 1A721, 1A731	55,0	10	100690	00 0	0,295	1	1	OM150	00 0	12 CL
	• Pair of cylinders	50120, 50125, 50160, 50170	10	100690	00 0	0,267	1	1	OM112	00 0	12 CL	
		11560, 11630, 11635	10	100690	00 0	0,295	1	1	OM114	00 0	12 CL	
	• Pair of cylinders with external tubular cylinder	50121, 50126, 50141, 50161, 50171, 50421, 50461, 50471, 50521, 50561, 50571	10	100690	00 0	0,295	1	1	OM116	00 0	12 CL	
		11551, 11631, 11731, 11736, 11931, 11936	10	100690	00 0	0,295	1	1	OM120	00 0	12 CL	
	• Pair of cylinders with external tubular cylinder	11660, 11670	10	100690	00 0	0,295	1	1	OM156	00 0	12 CL	
	• Pair of cylinders with external tubular cylinder	11521, 11721, 11726, 11921, 11926	50,0	10	100690	00 0	0,295	1	1	OM149	00 0	12 CL
		11661, 11671, 11761, 11771	50,0	10	100690	00 0	0,253	1	1	OM155	00 0	12 CL

Type	Description	Thick. Door Pins	Key item	Unit weight Kg	Pieces	ITEM				
						Type	Dim.	Hand	Fin.	Pers.
	<ul style="list-style-type: none"> Steel padlock plug 2 keys Pickled brass casing Complete with coupling plate item 1.07573.08.0 	10	1 00690 00 0	0,117	1	1	OM610	00 0 00	CL	
	<ul style="list-style-type: none"> External drive cylinder 1.07078.28.0 	10	1 00690 00 0	0,117	1	1	OM610	10 0 12	CL	
	<ul style="list-style-type: none"> External drive cylinder 1.07078.29.0 	10	1 00690 00 0	0,117	1	1	OM610	11 0 12	CL	
	<ul style="list-style-type: none"> Cylinder for 'push-open' Meroni locks 	10	1 00690 00 0	0,117	1	1	OM610	12 0 12	CL	
	<ul style="list-style-type: none"> Key extraction to position (0) Ring item 1.06021.10.0 Deadlock item 1.06414.20.0 or 1.06414.30.0 (to order separately) 	19	10 1 00690 00 0	0,117	1	1	OM410	00 0 12	CL	
	<ul style="list-style-type: none"> Microswitch (7 A, 250 V) with welding terminals Automatic return to key extraction position (0) Ring item 1.06021.10.0 	19	10 1 00690 00 0	0,117	1	1	OM415	01 0 12	CL	
	<ul style="list-style-type: none"> Microswitch (7 A, 250 V) with welding terminals Automatic return to key extraction position (0) Ring item 1.06021.10.0 	19	10 1 00690 00 0	0,117	1	1	OM415	03 0 12	CL	

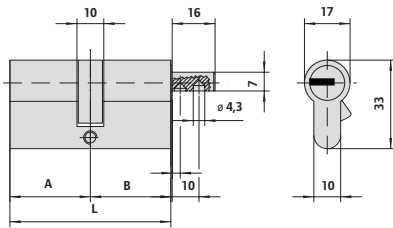
Drawings and dimensions



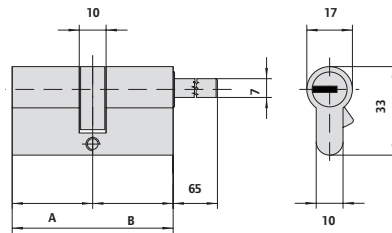
OM311



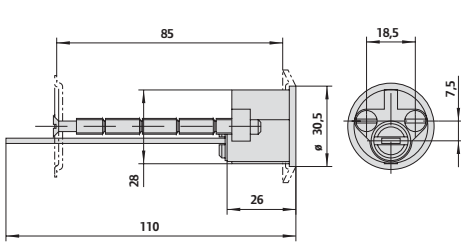
OM314



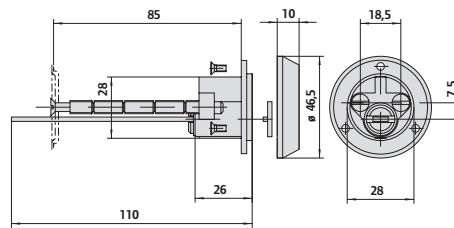
OM312



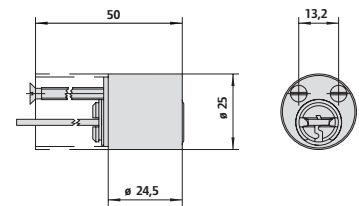
OM317



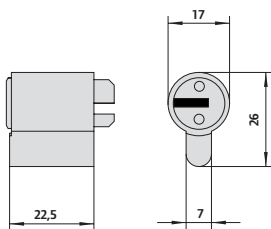
OM510



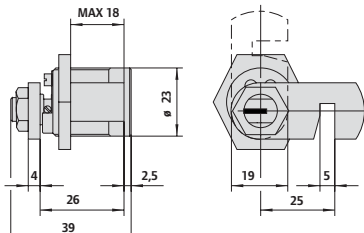
1.OM510.10.0



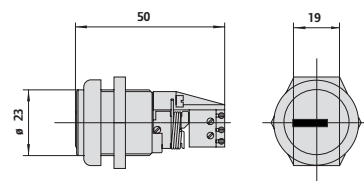
OM210



OM610



OM410



OM415

CISA S.p.A. reserves the right to modify the products illustrated in this catalogue without any prior notice. All given measurements are expressed in millimeters.



The Security Technologies division is a world leader in the supply of products and services for building and personal security. The leader products in this market are electronic and biometric access control systems; presence planning and detection systems; mechanical locks, padlocks and anti-theft cables; door closers, emergency exit systems, steel doors and frames, architectural hardware; technology and systems for global security markets.

CISA SpA
Via Oberdan, 42
48018 Faenza (RA) Italy
Tel. +39 0546 677111
Tel. +39 0546 677150
www.cisa.com

www.ingersollrand.com

PDE 641, 2011 Edition.